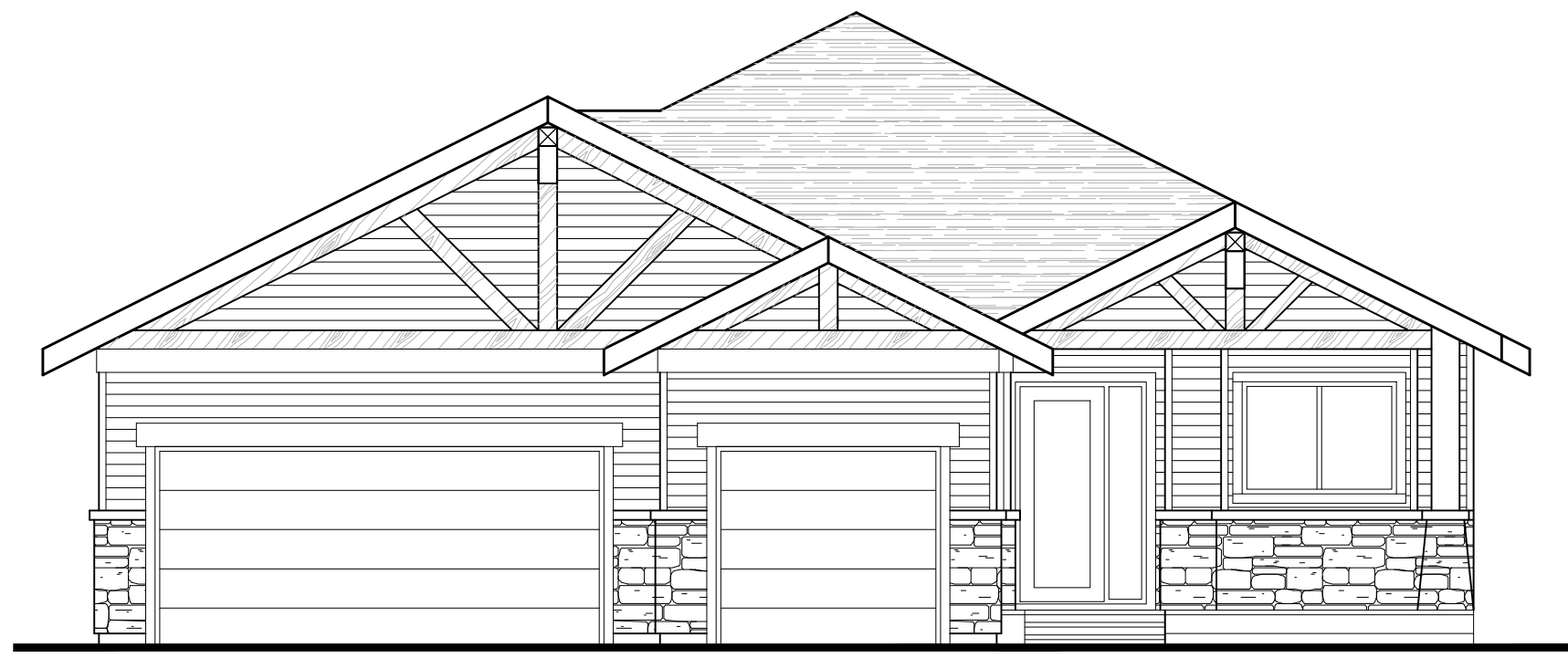


THE TAMARACK

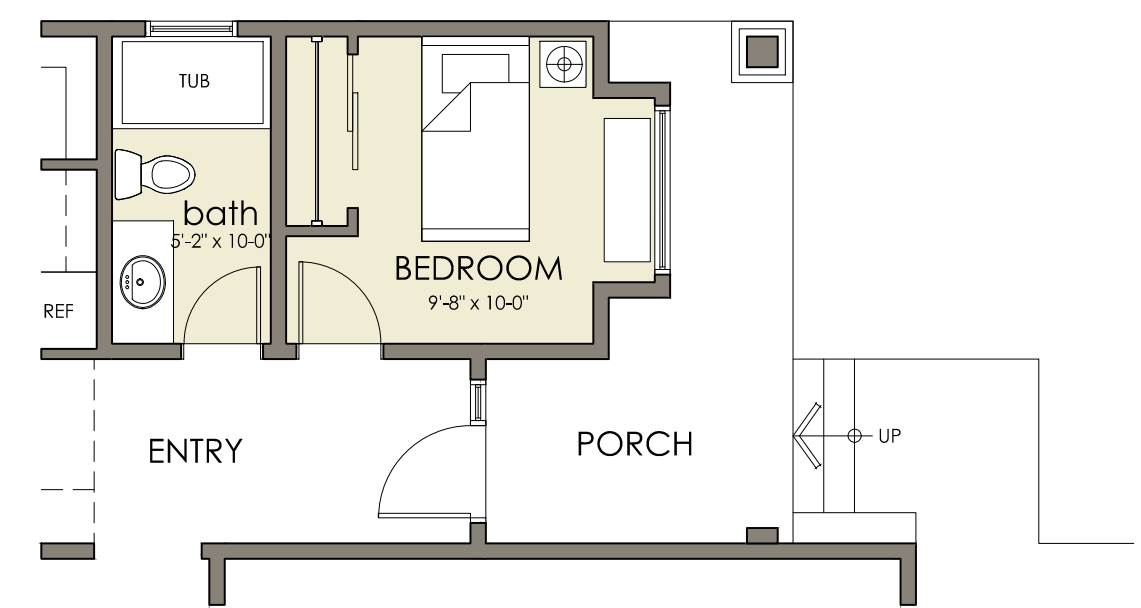
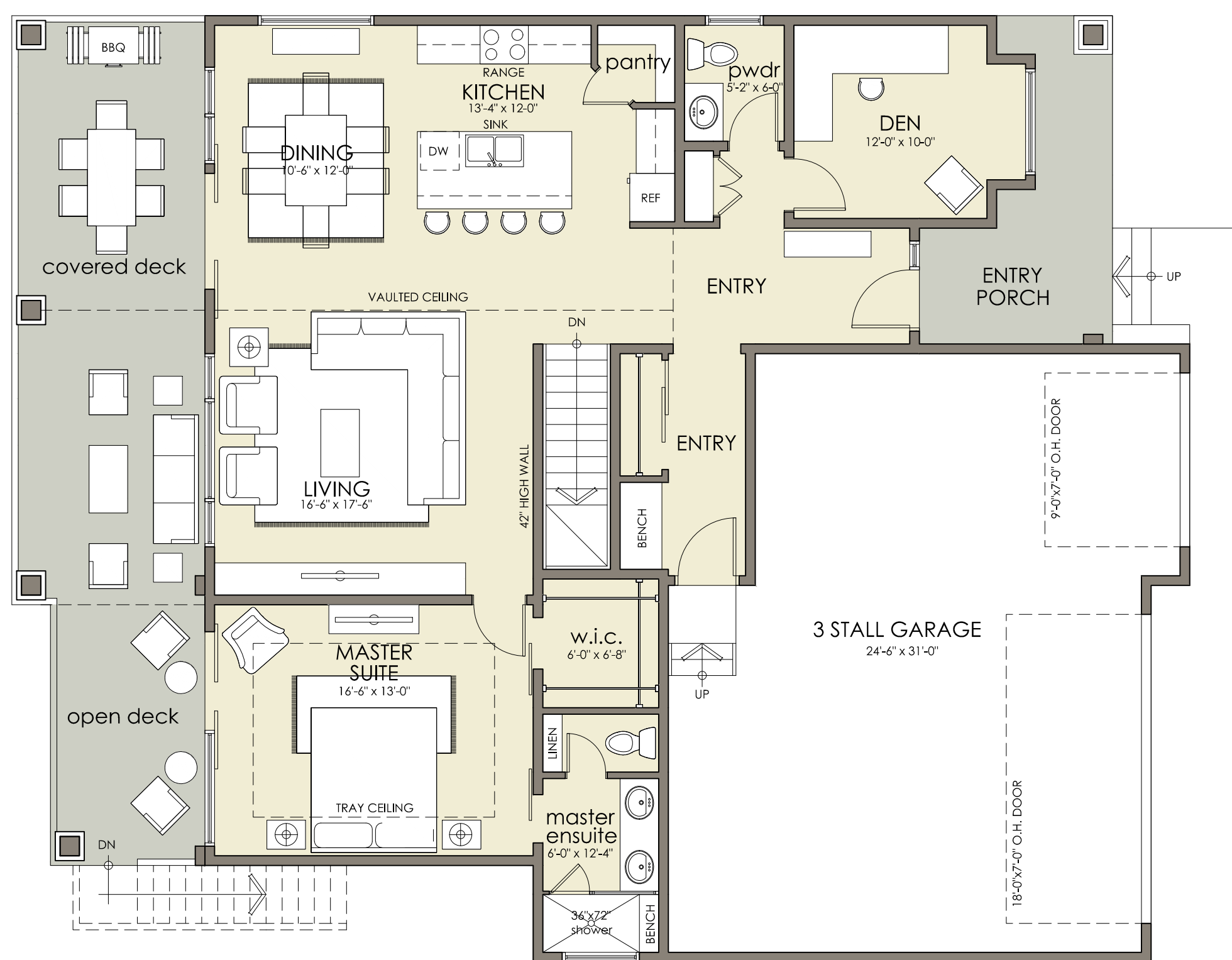
1431 SQ. FT. | 2 OR 3 BEDROOM | 2 1/2 OR 3 BATH | 3 STALL GARAGE
WITH OPTIONAL FINISHED BASEMENT



FRONT STREET ELEVATION

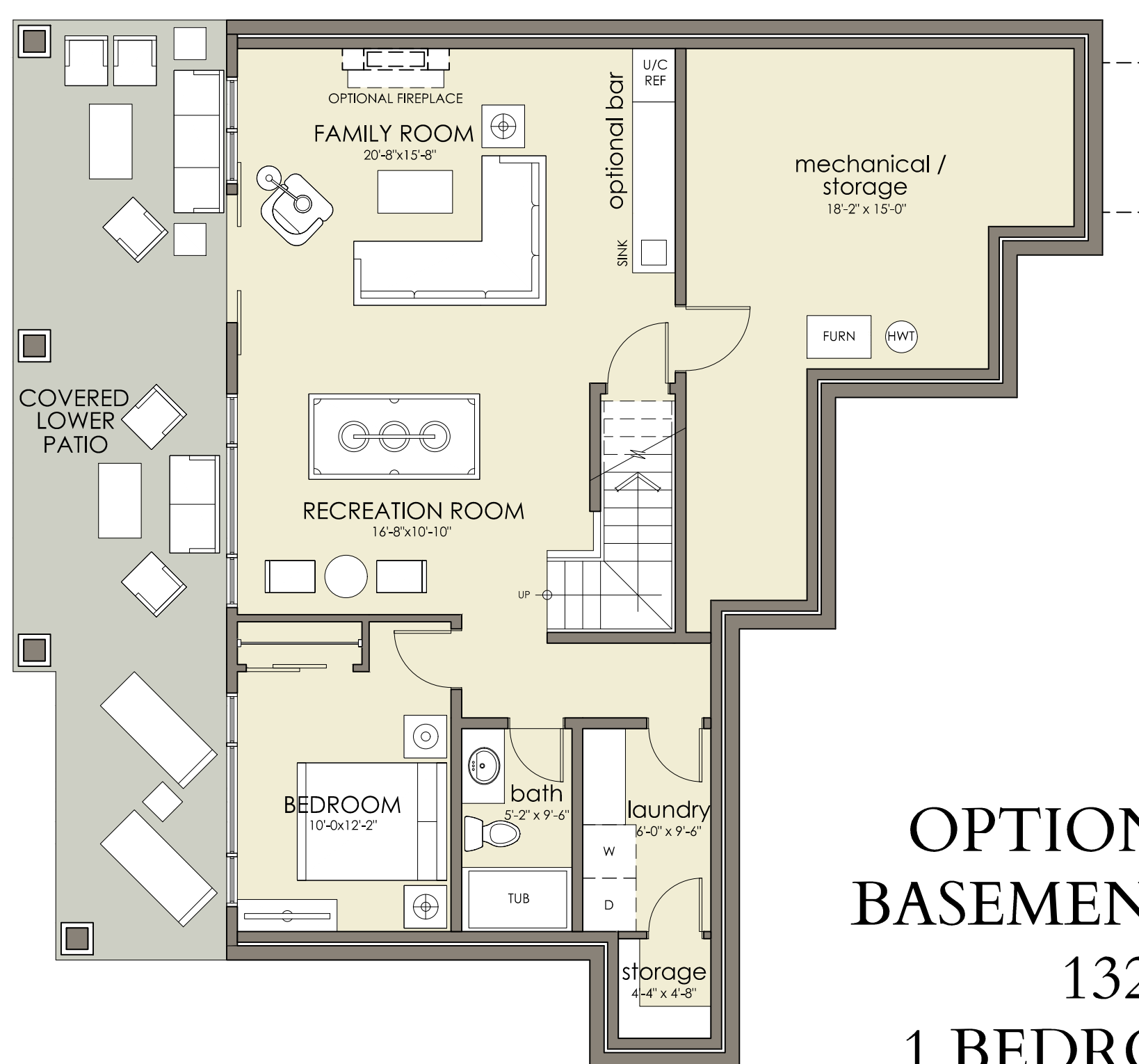


REAR ELEVATION



OPTIONAL 2ND BEDROOM
& FULL BATH

MAIN FLOOR PLAN
1431 SQ. FT.
1 BEDROOM / 1 1/2 BATH



OPTIONAL FINISHED
BASEMENT FLOOR PLAN
1321 SQ. FT.
1 BEDROOM / 1 BATH

The developer reserves the right to modify the floor plans, architectural features and finishes without notice unless agreed upon in a purchase contract. All renderings, maps, plans and other images are provided to assist purchasers in visualizing the project and may not accurately represent the final product. Square footages and lot dimensions are calculated based on architectural measurements and lot plans and thus may differ from the actual surveyed unit areas, as set forth on the registration plan.